

March 2024

THE TRANSIT



SOUTH CAROLINA
SECTION

Upstate Branch



ASCE Upstate Branch Newsletter—South Carolina Section

In this issue:

- March Branch Meeting
- Upcoming Events

March Branch Meeting

Date: Tuesday, March 26th

Time: 11:45 am to 1:00 pm*

Location: ReWa Discovery Lab
[564 Mauldin Rd, Greenville, SC 29607](#)



Civil & Environmental
Consultants, Inc.

Meeting Cost:

With Lunch:

\$12 for Members

\$17 for Non-Members

Without Lunch:

\$5 for Members

\$10 for Non-Members

**Attendees must register by 4pm the day before the meeting to be guaranteed a lunch & seat.*

RSVP: [Click to Register!](#)

****New Registration Platform
Requires ASCE Login**

ASCE Membership Notice:

Members with outstanding dues for 2023 and 2024 who have not renewed by March 31, 2024 will be dropped from ASCE's membership.

***If you are attending the Monthly Branch Meetings, please park in the ReWa LOWER parking lot. Please see attached for map.*

Presentation: Behind the Curtain of Environmental Due Diligence

Presented by Britney Barnes, , and Co-Presenter Andrew McCorkle, PG, CPG

A quick history of how perception of environmental issues have changed over the years along with a case study on environmental risk management. Other key issues: Why perform a Phase I Environmental Site Assessment? What is a Recognized Environmental Condition (REC)? How do these affect financing or development?

Ms. Britney Barnes leads the environmental group in CEC's Greenville, SC office. She has more than 25 years of experience in the environmental consulting industry, most of which has been spent working on projects in the Upstate. With a focus on environmental due diligence, Britney's expertise includes anything from the Phase I ESA aspect of a project to implementing multifaceted environmental assessments, including Brownfields, and developing remedial strategies with the end use of a property in mind.

Mr. McCorkle has more than 30 years leadership experience in the environmental industry, including six years environmental management for a major oil company, more than 20 years project/program management for international consulting firms, and two years geotechnical field experience. He has expertise in hydrocarbon/ petrochemical investigation and remediation, federal and state environmental regulations, environmental/risk communication, legal issues related to contaminated property, and hydrogeologic data interpretation.

ASCE Upstate 15th Annual Popsicle Bridge Event

March 9th, 2024

THANK YOU TO ALL SPONSORS!

[See attached for the Sponsor's flyers](#)

Younger Member Happy Hour

May 9th, 2024

First Drink FREE for ASCE Members!

[See attached for more details.](#)

2024 SC Engineering Conference & Trade Show

June 6th - 8th, 2024

For Registration and hotel reservations: [Click HERE](#)

2023-2024 Branch Officers

Past President

Grant Hollis, P.E. – Carolina TEA

President

Jason Jansante, P.E. – Bunnell Lammons Engineering, Inc.
asceupstate.president@gmail.com

Vice President

Ryan Holder, P.E. – HHNT, Inc.
asceupstate.vicepresident@gmail.com

Treasurer

Amanda Sheridan, P.E. – McFarland Johnson
asceupstate.treasurer@gmail.com

Secretary

Elly Pillers – Carolina TEA
asceupstate.secretary@gmail.com

Outreach Chairs

Membership Chair

Matt Miller, Civil & Environmental Consultants, Inc.
matthew.miller@cecinc.com

Bridge Event Co-Chairs

Stephanie Gates, P.E. – Site Design, Inc.
sgates@sitedesign-inc.com

Jamie Sherer, P.E. – SeamonWhiteside
jamieksherer@gmail.com

Younger Member Chair

Jake Elsman, E.I.T. – S&ME
asceupstate.youngmembers@gmail.com

Website Chair

Anjana Sidhu, P.E.— AECOM
anjana.sidhu@aecom.com

UPCOMING EVENTS

- 3/26 - March ASCE Upstate Branch Meeting.
- 4/23 - April ASCE Upstate Branch Meeting
- 4/24 - DBG Networking Event
- 5/9 - YM Event
- 5/28 - May ASCE Upstate Branch Meeting
- 6/6—6/8 - 2024 SC Engineering Conference & Trade Show
- 6/25 - June ASCE Upstate Branch Meeting

Interested in Contributing to the Branch?

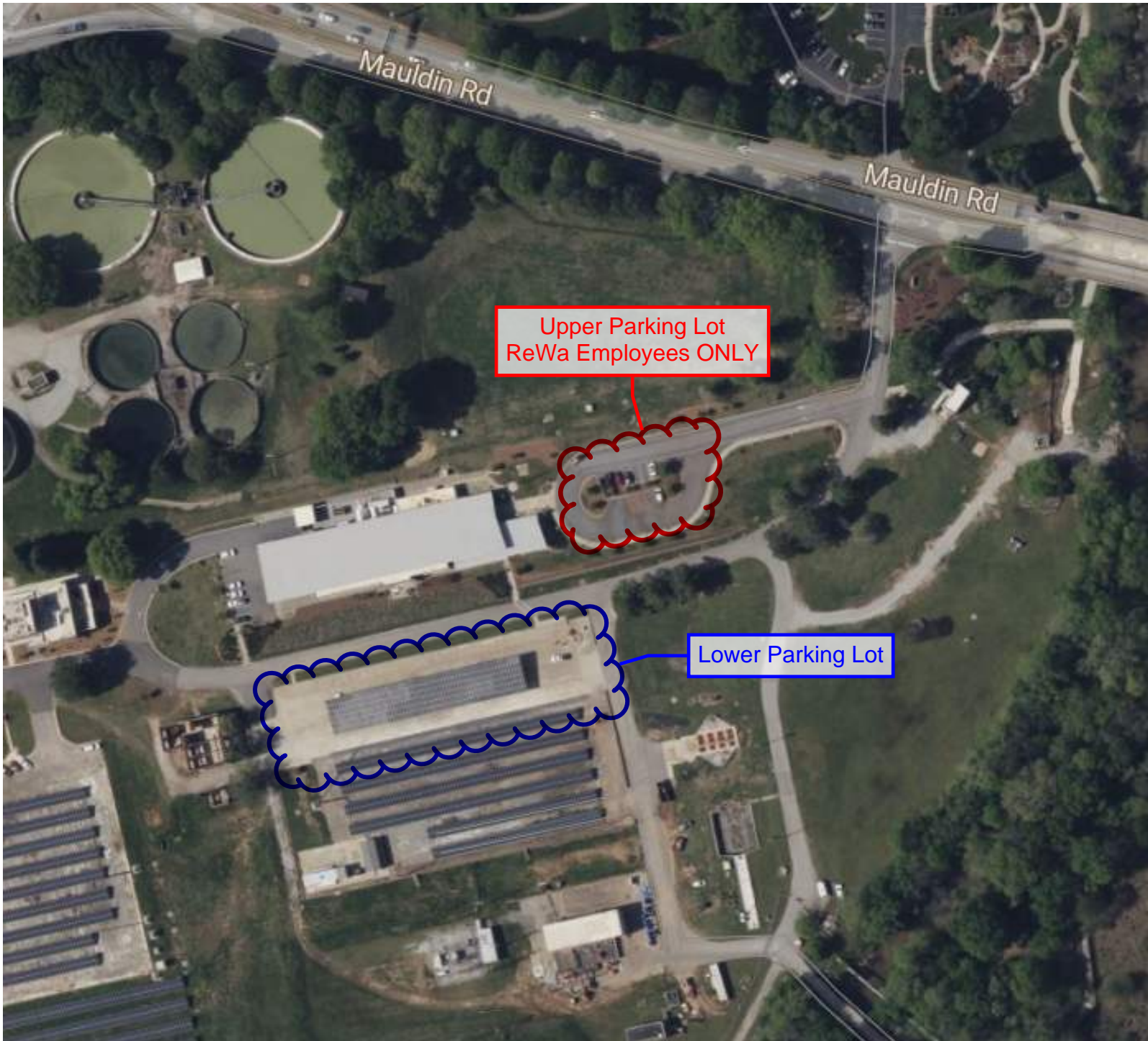
- If interested in earning 2 PDHs by giving a presentation to the Branch, please contact asceupstate.vicepresident@gmail.com.
- If you are interested in joining the Younger Member Committee, please contact asceupstate.youngmembers@gmail.com.

JOB OPENINGS

Please see the ASCE Upstate Job Board for postings.

ASCE members can earn up to 10 PDHs for free on the [ASCE website](#).

Please use LOWER Parking Lot when attending the monthly branch meetings



**JOIN US FOR HAPPY HOUR @
SOUTHERNSIDE BREWING CO. ON
THURSDAY MAY 9TH @ 6 PM
25 DELANO DRIVE, UNIT D, GREENVILLE, SC**



First Drink Free for ASCE Members!
All engineers welcome to join our
ASCE Younger Member Group.
Please RSVP by May 6th,
Please send your RSVP or questions
to jelsman@smeinc.com

CarolinaTEA

Carolina Transportation Engineers and Associates, PC

Congratulations to all of the 2024 Popsicle Stick Bridge participants! We are excited to see you engaged in STEAM activities at such a young age!

Carolina TEA is a multidisciplinary engineering firm that provides project management, design, and inspection services for bridge, roadway, and rail projects. Our enthusiastic approach to engineering is evidenced by the constructible designs and design innovations our staff produce every day– which has resulted in millions of dollars in construction savings.

Passionate about innovation.
Active in our profession.
Driven by our values.



SCDOT
Emergency Bridge Replacement Project
S-816 (Smith Ford Road) over Mud Creek

Charlotte, NC | Columbia, SC | Easley, SC | Charleston, SC
www.carolina-tea.com



Our why starts with you.

You shouldn't have to figure out your financial journey alone. As a Spero member, you won't have to. People-first approach, authentic advice, and personalized solutions. It's what we've been doing for over 85 years.

Join the flock today!
www.spero.financial/realstories

Spero is family.

Giovannie R.
Member since 2021



Insured by NCUA

About Us

SeamonWhiteside (SW+) is a full-service land design firm that provides comprehensive services tailored to the needs of each project for the purpose of facilitating the planning, design and construction.

Our Approach

At SW+ we view ourselves as a partner in site design; working by our clients side with their goals in mind. This means we strive to fully understand their vision, approach their project with passion, continuously collaborate, produce quality plans, and engage in the construction process to help see the vision through.



Civil Engineering + Landscape Architecture + Construction Administration + Land Surveying



SEAMONWHITESIDE.COM + @seamonwhiteside

GREENVILLE | SPARTANBURG | CHARLOTTE | RALEIGH | MOUNT PLEASANT | SUMMERVILLE





Engineered
Ground
Improvement

Wurster Betterground

Products:

Aggregate Piers (AMPiers)

Rigid Inclusions

Vibrocompaction

Offices:

Greenville | Asheville | Charleston | Tampa

Contact Info:

Estimating@wbgvibro.com



A Wurster Engineering & Construction and Betterground Equipment Joint Venture



BUNNELL
LAMMONS
ENGINEERING



864.288.1265



www.blecorp.com



info@blecorp.com

TECHNICAL EXPERTISE FOR TOUGH CHALLENGES

OUR SERVICES

- Environmental Engineering & Consulting
- Geotechnical Engineering
- Construction Materials Testing
- Building Code & Inspections
- Solid Waste Engineering
- Transportation Services
- Drilling & Remediation
- Materials Laboratory



6004 Ponders Court
Greenville, SC 29615



30 Park Ridge Drive
Fletcher, NC 28732



720 Gracern Road, Suite 132
Columbia, SC 29210



Terracon Firm Overview

Wherever you are on your project journey, Terracon's employee-owners are ready to meet you and help you each your goal. Since our founding in 1965, Terracon has grown and evolved to become a thriving, employee-owned, multidiscipline engineering consulting firm offering expertise related to Geotechnical, Environmental, Material and Facilities. Our more than 6,000 curious minds include engineers, scientists, architects, facilities experts, and field professionals focused on solving engineering and technical challenges from more than 175 locations nationwide. On-time and real-time data driven insights, provided by our talented employee owners, create an unmatched client experience that spans the lifecycle of any project from earth-to-sky.



Terracon ranks as a top 20 design firm by Engineering News-Record (ENR). Our successful growth has included organic expansion and innovation as well as the acquisition of more than 60 firms with specialized capabilities. A focused and uncompromising dedication to safety has been integral to how we support our employees, clients, and communities. Throughout the life of your project, we won't just point the way – we'll go with you. From site selection to design and construction, to maintaining the life of the structure, we'll help you achieve success through engineering and scientific expertise, a passion for problem-solving, an uncompromising commitment to safety, and a drive to explore. We're ready when and where you are. Explore with us!

Bridging the gap between idea + achievement



At HDR, we're helping our clients push open the doors to what's possible, every day.



Greene Street Bridge | Columbia, SC

hdrinc.com



SITE DESIGN, INC.

CIVIL ENGINEERS ■ LAND SURVEYORS ■ LANDSCAPE ARCHITECTS

SITE DESIGN, INC. is proud to be a part of the ASCE Upstate Popsicle Bridge Event! By supporting local events such as this, we see an opportunity to help develop the next generation of engineering professionals and supporting our Core Purpose;

To provide the methods for responsible and sustainable growth while protecting the general welfare of the public.

We understand your world because we live in it. We drink the same water, drive the same highways, visit the same buildings, work in the same industries and live in the same neighborhoods. We will never sacrifice quality or creativity for a deadline. Because each project and client is unique, we build our teams based on your needs.

The development of your property is in essence the development of your business. With the appropriate combination of skills and experience, we offer an exceptional team tailored specifically for your project. Our project management, production, and quality control process allow us to consistently deliver quality, cost effective projects that develop your property and structure for premium use. Let us help you realize your vision today!

Office: 864-271-0496
225 Rocky Creek Rd
Greenville, SC 29615

Learn more at:
WWW.SITEDESIGN-INC.COM



Headquartered in Greenville, SC, Wurster Engineering & Construction specializes in design/build, geotechnical construction including compacted aggregate piers, AMPier®, vibro compaction, rigid inclusions, soil nail walls, micropiles, tieback anchors, slope stabilization, rock and ground anchors, shotcrete, grouting and augercast piles. With offices in Asheville, NC, Greenville, SC, and Tampa, FL, Wurster performs work throughout the southeastern United States.

Contact Information:

President: Jerad Triplett

jerad.triplett@wursterinc.com

1-844-WURSTER

864-627-7751

34 Carrie Drive

Greenville, SC 29615

www.wursterinc.com



*A better experience—
and better for the experience.*

A water and
transportation
infrastructure firm
focused on going above,
below, and beyond the
surface to move
communities forward.





Engineering, Planning, and Environmental Consultants

SERVING SOUTH CAROLINA FROM:

- Columbia
- Fort Mill
- Charleston
- Greenville

kimley-horn.com